



# THE CLOCK TOWER

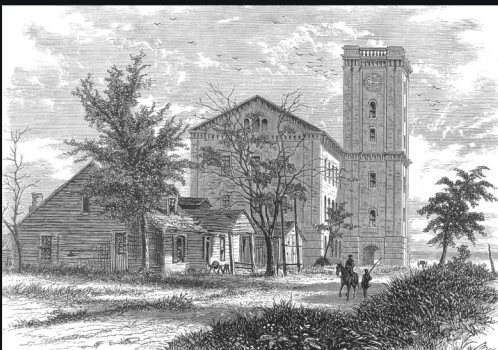
## ROCK ISLAND ARSENAL Installation



On 12 JUL 1862, an Act of Congress established three new arsenals at Columbus, Ohio, Indianapolis, Indiana, and Rock Island, Illinois. MAJ Charles P. Kingsbury was the first commander of the new Rock Island Arsenal. Originally intended to be "a small arsenal for repair" of various pieces of equipment, the original installation design included three stone buildings. The first of these buildings was Storehouse A, or what we know today as the Clock Tower building.

Construction began sometime between 1862 and 1863 and it was completed sometime before 1867. The structure, as its name implied, was a storehouse for war materiel. The clock tower itself was originally an elevator shaft. The clock faces are each 12 feet in diameter and run on the same clockworks that was originally installed in the tower.

Today the building is used by the U.S. Army Corps of Engineers, Rock Island District



RIA established 12 JUL 1862

First commander: MAJ Kingsbury

Construction begins 1862-63

Building completed 1865-67

Clock faces are 12' in diameter

Uses original clock works

Houses Corps of Engineers



## LEARN MORE HISTORY

[www.aschq.army.mil](http://www.aschq.army.mil)



ON THE LINE